

Thermoresponsive Hydrogel as a Delivery Scaffold for Transfected Rat Mesenchymal Stem Cells

Bradley A. Borden,[†] James Yockman,[‡] and Sung Wan Kim^{*,†,‡}

Department of Bioengineering and Center for Controlled Chemical Delivery, Department of Pharmaceutics and Pharmaceutical Chemistry, University of Utah, Salt Lake City, Utah 84116

Received April 2, 2010; Revised Manuscript Received June 25, 2010; Accepted June 28, 2010

Abstract: The concept of stem cells as a therapeutic agent has been gaining momentum. A common mode of administration of these cells is by direct injection into the target tissue. This can result in many of the cells being lost due to reflux from the injection site leading to a local loss of implanted cells. PoligoGel is a nontoxic hydrogel with an LCST near body temperature. It is also shown to be nontoxic to multiple cell types, and in the case of rat mesenchymal stem cells does not alter their differentiative capacity, either by inducing differentiation, or limiting the potential for subsequent differentiation after removal from the gel. Embedding cells in PoligoGel also does not interfere with the cells' ability to delivery therapeutic growth factors post transfection with plasmid DNA. Here a thermoresponsive hydrogel, PoligoGel, is shown to have potential to act as a scaffold for the retention of cells at an injection site, mitigating migration or washing of the cells away from the target site after implantation.

Keywords: Thermoresponsive hydrogel; MSC; transfection; cell delivery

Introduction

Cell based treatment for disease is growing in scope and effectiveness. Uses currently range from neural therapies¹ to heart treatments² and cartilage.³ This has increased the need to develop delivery strategies that are able to maximize the potential of these cellular treatments. This is especially true in the case of autografts, where limited numbers of cells

can be isolated and a fast turn around time is often key.⁴ While the use of cells suspended in saline is commonly demonstrated in studies, it is not perfect; only a limited number of cells may engraft at the implant site. One study found only 10% of injected cells were retained 30 min after a myocardial injection.⁵ The authors concluded by commenting on the need of furthering the development of strategies to retain the cells where needed.

Bone marrow derived mesenchymal stem cells (MSCs) have been known for over a decade to have the potential for differentiating into multiple cell types.⁶ This cell type can be obtained from the bone marrow by aspiration, resulting in a large number of collected cells which do not require harsh enzymatic treatment to isolate from the host tissue, or intensive isolation procedures. In many instances all that is required is simply taking the adherent fraction of mono-

* Corresponding author. Mailing address: University of Utah, BRPB, Rm 205, 20 South 2030 East, Salt Lake City, UT 84112. E-mail: sw.kim@pharm.utah.edu. Tel: (801) 581-5022. Fax: (801) 581-7848.

[†] Department of Bioengineering.

[‡] Center for Controlled Chemical Delivery, Department of Pharmaceutics and Pharmaceutical Chemistry.

- (1) Lindvall, O.; Kokaia, Z. Stem cells for the treatment of neurological disorders. *Nature* **2006**, *441*, 1094–1096.
- (2) Seeger, F. H.; Zeiher, A. M.; Dimmeler, S. Cell-enhancement strategies for the treatment of ischemic heart disease. *Nat. Clin. Pract. Cardiovasc. Med.* **2007**, *4* (Suppl. 1), S110–3.
- (3) Koga, H.; Engebretsen, L.; Brinckmann, J. E.; Muneta, T.; Sekiya, I. Mesenchymal stem cell-based therapy for cartilage repair: a review. *Knee Surg., Sports Traumatol., Arthrosc.* **2009**, *17*, 1289–1297.

- (4) Itzhaki-Alfia, A.; et al. Patient characteristics and cell source determine the number of isolated human cardiac progenitor cells. *Circulation* **2009**, *120*, 2559–2566.
- (5) Hudson, W.; et al. Beating and arrested intramyocardial injections are associated with significant mechanical loss: implications for cardiac cell transplantation. *J. Surg. Res.* **2007**, *142*, 263–267.
- (6) Pittenger, M. F.; et al. Multilineage potential of adult human mesenchymal stem cells. *Science* **1999**, *284*, 143–147.

nuclear cells; this does result in some heterogeneity in the population however.⁷

Scaffolding systems seeded with cells is one method for limiting the departure of implanted cells from the target area. This has been accomplished by preformed scaffolds,⁸ or injectable *in situ* forming scaffolds which may be stiff⁹ or more often a hydrogel.^{10,11} Cell sheets have also been used with success.¹²

Hydrogels are ideal candidates for soft tissue as they are supple, and generally perform well from a biocompatibility perspective. Hydrogels can also be tailored by altering the cross-link density, the pore size, degradability, stiffness, and other parameters in order to achieve the requisite properties.¹³ Hydrogels have long been used as a biomaterial for local delivery of small molecules including examples from the late 1970s.¹⁴ More recently *in situ* gelling hydrogels have been used to deliver various molecules such as steroids, proteins, and chemotherapy agents.^{10,15–17} Materials undergoing gelation *in situ* are especially useful due to the ease of delivery, a simple injection. Hydrogels which gel via chemical cross-linking have potential drawbacks, including reactivity of active groups with host tissues, leachable small molecules, monomer or initiator, limited working time for injection prior to gelation, or the need for additional equipment, such as a UV source.

In comparison stimuli sensitive, and specifically thermo-responsive, hydrogels do not have these drawbacks. However, they can be significantly more difficult to customize without skewing the hydrophilic/hydrophobic balance and

altering the LCST. The lack of covalent cross-linking also tends to yield less mechanically stable materials. Temperature and pH change can be used to initiate a phase change in these polymers leading to gelation, independently, or used in conjunction with success.^{15,18} Temperature sensitive polymers have been widely studied.^{19,20} Some of these polymers, such as Pluronic F127, have successfully been used for drug delivery, but have met with difficulty when used for cell encapsulation where the amphiphilic nature of the polymers can lead to membrane destabilization resulting in cell death.²¹ PoligoGel is a novel degradable thermosensitive hydrogel manufactured by SamYang Corp. of Korea covered by United States Patent number 7,655,735. It is based on multiple alternating blocks of PEG and PPO or PBO joined by degradable dicarboxylic linkages and has an LCST near physiological temperatures. It is nontoxic to multiple cell lines including rMSCs, human umbilical vein endothelial cells (HUVECs), and mouse colon carcinoma (CT-26), and in the case of rMSCs does not influence their pluripotency. Here it is shown to be a suitable material for the delivery of bone marrow derived rat mesenchymal stem cells (rMSCs). When used with transfected MSCs, excreted growth factors are able to diffuse from the gel and elicit a growth response in HUVECs, allowing for a wide range of potential treatments.

Experimental Section

Cell Culture. rMSCs were obtained from Tulane University's Center for Gene Therapy and expanded as recommended. In brief, cells were grown in minimum essential medium alpha (Invitrogen, Catalog number 12561-056), supplemented with 20% FBS (biowest, Catalog number S01520) and 1× penicillin/streptomycin (Invitrogen, Catalog number 15140-122). Medium was exchanged every 3–4 days. Cells for expansion were plated at approximately 100 cells/cm². Cells are passaged at a confluency of 70–90%. To lift the cells they are washed in PBS and incubated in TrypLE Express (Invitrogen, Catalog number 12605-010) for five minutes, or until detached from the plate. CT-26 cells were grown in RPMI-1640, 10% FBS and 1× penicillin/streptomycin, but otherwise cultured the same as the MSCs. HUVEC cells were grown in EGM-2 BulletKit medium (Lonza CC-3162) used as supplied. Cells were passaged at 90% confluency, and medium was refreshed every 2–3 days. Primary cells were used at passage numbers 10 or less.

MTT assays were performed by adding MTT to fresh growth medium to a final concentration of 0.2 mg/mL. Cells

- (7) Wagner, W.; et al. Comparative characteristics of mesenchymal stem cells from human bone marrow, adipose tissue, and umbilical cord blood. *Exp. Hematol.* **2005**, *33*, 1402–1416.
- (8) Xie, F.; et al. Chondrogenic differentiation of mouse embryonic stem cells promoted by mature chondrocytes. *Sci. China, Ser. C: Life Sci.* **2008**, *51*, 774–778.
- (9) Xu, H. H. K.; Weir, M. D.; Simon, C. G. Injectable and strong nano-apatite scaffolds for cell/growth factor delivery and bone regeneration. *Dental Mater.* **2008**.
- (10) Van Tomme, S. R.; Storm, G.; Hennink, W. E. In situ gelling hydrogels for pharmaceutical and biomedical applications. *Int. J. Pharm.* **2008**, *355*, 1–18.
- (11) Nguyen, K. T.; West, J. L. Photopolymerizable hydrogels for tissue engineering applications. *Biomaterials* **2002**, *23*, 4307–4314.
- (12) Shimizu, T.; Sekine, H.; Yamato, M.; Okano, T. Cell sheet-based myocardial tissue engineering: new hope for damaged heart rescue. *Curr. Pharm. Des.* **2009**, *15*, 2807–2814.
- (13) Peppas, N. A. H. J. Z.; Khademhosseini, A.; Langer, R. Hydrogels in Biology and Medicine: From Molecular Principles to Bionanotechnology. *Adv. Mater.* **2006**, *18*, 1345–1360.
- (14) Zentner, G. M.; Cardinal, J. R.; Kim, S. W. Progesterin permeation through polymer membranes II: diffusion studies on hydrogel membranes. *J. Pharm. Sci.* **1978**, *67*, 1352–1355.
- (15) He, C.; Kim, S. W.; Lee, D. S. *In situ* gelling stimuli-sensitive block copolymer hydrogels for drug delivery. *J. Controlled Release* **2008**, *127*, 189–207.
- (16) Vernon, B. L.; Fusaro, F.; Borden, B.; Roy, K. H. Partition-controlled progesterone release from waterborne, *in situ*-gelling materials. *Int. J. Pharm.* **2004**, *274*, 191–200.
- (17) West, J. L.; Hubbell, J. A. Photopolymerized hydrogel materials for drug delivery applications. *React. Polym.* **1995**, *25*, 139–147.

- (18) Shim, W. S.; Yoo, J. S.; Bae, Y. H.; Lee, D. S. Novel injectable pH and temperature sensitive block copolymer hydrogel. *Biomacromolecules* **2005**, *6*, 2930–2934.
- (19) Jeong, B.; Kim, S. W.; Bae, Y. H. Thermosensitive sol-gel reversible hydrogels. *Adv. Drug Delivery Rev.* **2002**, *54*, 37–51.
- (20) Jeong, B.; Bae, Y. H.; Lee, D. S.; Kim, S. W. Biodegradable block copolymers as injectable drug-delivery systems. *Nature* **1997**, *388*, 860–862.
- (21) Khattak, S. F.; Bhatia, S. R.; Roberts, S. C. Pluronic F127 as a cell encapsulation material: utilization of membrane-stabilizing agents. *Tissue Eng.* **2005**, *11*, 974–983.

Table 1. List of Primers Used in PCR for Amplification of Target Genes

gene	forward primer	reverse primer
aP2	AATTCGGCAGCACTCCTTGAAAGC	TGGTCGACTTTCCATCCCCTTCT
PPAR- γ	TCTCCAGCATTTCTGCTCCACACT	ATACAAATGCTTTGCCAGGGCTCG
Runx2	CAAGTGCGGTGCAAACTTTCTCCA	TGTTTGACGCCATAGTCCCTCCTT
osteocalcin	AATGCCACTGCGTATTGTTGACG	TGGCGGTGAGATAATGGATGTGGT
GADPH	GACCCCTTCATTGACCTCAACTAC	AGATGATGACCCCTTTGGCTCC
VEGF	GCCAGCACATAGGAGAGATGAG	GCTTGTCACATCTGCAAGTACG
FGF	CAAGCAGAAGAGAGAGAGTTGTGTC	TCAGCTCTTAGCAGACATTGGAAG
PDGF-C	TCCTGCTGACATCTGCCCTG	CAGGAGACAACCTGGCCAG

were incubated for 3–4 h at 37 °C 5% CO₂ to allow the formation of formazan crystals. The medium was then removed, and the cells were washed with PBS. The formazan crystals were then dissolved with DMSO, and the absorbance was read on a plate reader (BioRad model 680) at 570 nm.

Trypan Blue 0.4% (Sigma, T-8154) was added to cells in suspension at a 1:1 ratio. The mixture was allowed to incubate at room temperature for 5 min, after which live and dead cells were counted on a hemocytometer.

Cell viability by alamarBlue was accomplished according to the manufacturer's instructions. Briefly, cells were plated in white clear bottom 96-well plates. At the required time points 10 \times alamarBlue was added to the culture medium and allowed to incubate for between 4 h and overnight, depending on the cell concentration. Plates were then read on a PerkinElmer LS 55 luminescence spectrometer.

Fibrin gels were prepared in the following manner. Fibrin powder (Sigma, F2629-5g) was reconstituted in PBS by adding the fibrin to the top of the PBS in a 50 mL tube with gentle rocking and allowed to dissolve. Fibrin concentrations were calculated to be near 10 mg/mL using UV/vis. Thrombin (Sigma, T4648) was reconstituted in PBS at 100 units/mL and stored at –20 °C until used. Gels were made in 96-well plates by adding 20 μ L of thrombin to 30 μ L of fibrin solution.

Differentiation. Cells were grown to confluency in 6-well plates prior to adding the appropriate induction medium. For osteogenic differentiation it included complete medium supplemented with 10 mM β -glycerol phosphate, 50 μ g/mL ascorbic acid, and 100 nM dexamethazone; medium was refreshed every 3–4 days. Adipogenic differentiation medium was used as reported by Winer et al.²² Induction medium consisted of growth medium supplemented with 1 μ M dexamethaxone, 200 μ M indomethacin, 10 μ g/mL insulin, and 0.5 mM 3-isobutyl-1-methylxanthine, which was placed on the cells for 3 days, followed by maintenance medium (complete medium with 10 μ g/mL insulin) for one day. This cycle was repeated twice, for a total of 8 days. All of the supplements used were obtained from Sigma, and were cell culture tested.

PoligoGel. PoligoGel (SamYang Corp.) was obtained in a lyophilized cake. To hydrate the polymer it was mixed with unsupplemented growth medium or PBS and stirred overnight at 4 °C to make a 10% w/v solution. For suspending cells in the gel, a 10% PoligoGel solution was mixed at 4 °C 1:1 with cells suspended in complete medium to give a 5% polymer solution and the desired concentration of cells. The 5% solution was then placed in a cell culture incubator at 37 °C. 5% final solutions were used unless otherwise noted. Properties of 5% gels are mechanically sufficient for cell delivery without the added viscosity and associated difficulty of working with higher fraction gels.

SEM Data. Samples were prepared by flash freezing in liquid nitrogen, followed by lyophilization. Samples were then imaged on a FEI Quanta 600 FEG.

RNA Isolation and PCR. RNA was isolated from rMSCs using TRIzol reagent (Invitrogen, 15596-018). cDNA was created with SuperScript III First-Strand (Invitrogen, 18080-051) using oligo DT primers following the recommended protocol. PCR for amplification of the genes of interested was performed using either Kapa2G Fast PCR Kit or the Hot Start kit (KapaBiosystems). Primers used for amplification are listed in Table 1.

Transfection. Cells at about 50% confluency were transfected in serum free medium and allowed to incubate for 4 h, after which they were placed back in standard growth medium or gel mixed with growth medium. Cells were transfected with branched poly(ethyleneimine) at an N:P ratio of 10:1.

Results

Viability of cell types tested was not affected by the presence of PoligoGel at any of the concentrations tested. PoligoGel was tested on rMSCs, CT-26 (mouse colon cancer) cells, and human umbilical vein endothelial cells (HUVECs). In all cases the same trend was observed, no toxicity at nongelling concentrations of 0.1%, 0.5%, and 1% to a 5% or 10% gel. In each case there was no statistical difference by MTT assay at nongelling concentrations. At 5% or higher solutions the cells under the gel did not proliferate, but remained viable as measured by Trypan Blue. When confluent cells that were no longer actively dividing were used, there was no significant difference between the control and experimental groups as shown in Figure 1. Groups were normalized to samples without the use of PoligoGel.

(22) Winer, J. P.; Janmey, P. A.; McCormick, M. E.; Funaki, M. Bone marrow-derived human mesenchymal stem cells become quiescent on soft substrates but remain responsive to chemical or mechanical stimuli. *Tissue Eng., Part A* **2009**, *15*, 147–154.

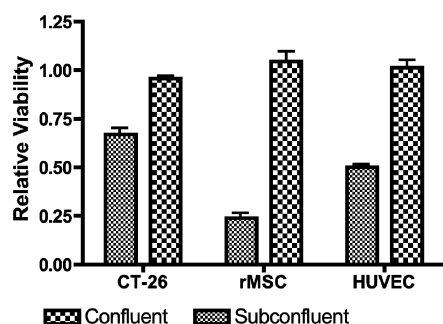


Figure 1. While the gel does not induce cell death, as confirmed by Trypan Blue staining, it does limit proliferation. When placed above confluent cells there is no change against confluent controls. Variations in the subconfluent values are based on differences in the initial number of cells present.

rMSCs suspended in PoligoGel also do not suffer any significant cell death. For these studies, cells were trypsinized, pelleted, resuspended in growth medium and placed on ice to lower the temperature. The cooled cell suspension was then mixed with PoligoGel, also cooled on ice, to achieve final concentrations of 100k, 200k, 500k and 1 million cells per milliliter and polymer concentrations of 5%. 500 μ L of the gel/cell mixtures were then placed in a 24-well plate. After 48 h cells were removed from the gel by cooling the gel and adding sufficient medium or PBS to lower the total concentration of polymer to prevent a gel from re-forming.

The mixture was then removed from the well and centrifuged at 400 rcf for 5 min to pellet the cells, which were resuspended in growth medium and analyzed with Trypan Blue. The viabilities ranged from 95% at 100k per mL to 85% at 1 million per mL.

Cells embedded in PoligoGel show a spherical morphology with no visible protrusion into the gel when viewed by light microscopy, not the typical spindle shape seen when cultured on substrates such as fibrin with sites for cell binding. They also do not appear to proliferate based on the observation that cells remain suspended and are typically seen independent of other cells, not forming clusters as would be expected for dividing cells unable to migrate through the substrate. Scanning electron microscopy confirms this, with cells appearing to be encased in the polymer in stark contrast to cells grown in or on a fibrin gel where cells can be seen to attach and spread, resulting in a spindle shape as seen in Figure 2.

When culturing stem cells, others have observed that the substrate properties influence cell fate along different differentiative pathways.²² Substrate properties are also important for other cell types as well.^{23,24} MSCs growing in PoligoGel are exposed to a soft three-dimensional scaffold and undergo a halt in proliferation and an induced morphological change. It was possible that cellular capacity to differentiate was effected. To ensure that PoligoGel does not push rMSCs to differentiated fates, cells were cultured for 1

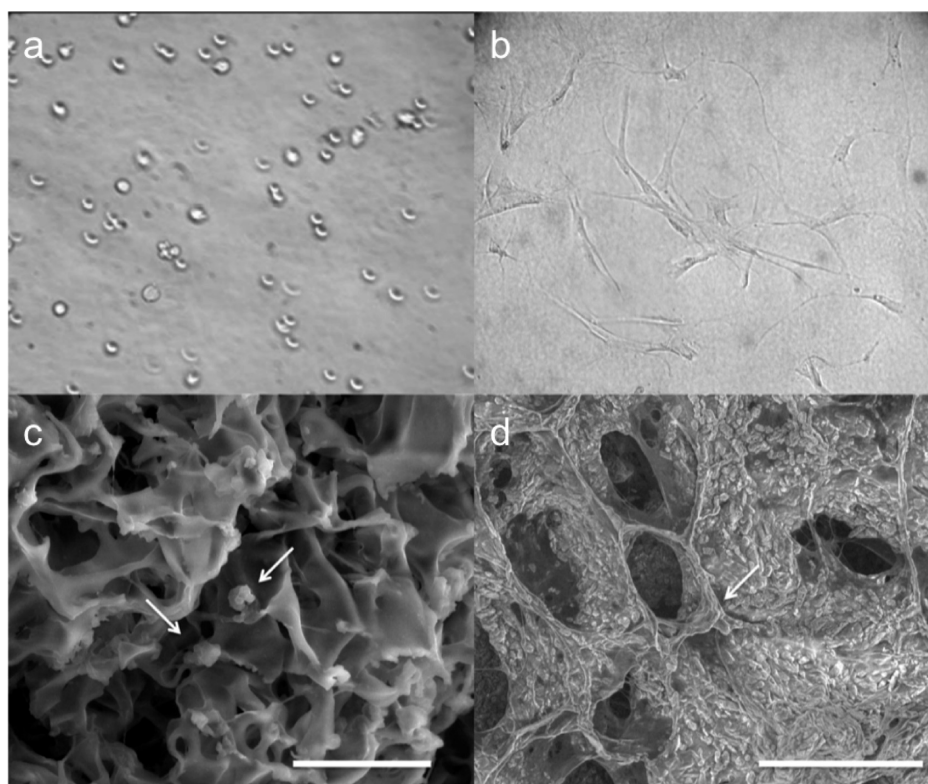


Figure 2. Images of rMSCs on PoligoGel and fibrin gels. (a) Image taken with a light microscope with cells in PoligoGel 5%, (b) light microscope image of rMSCs growing on a fibrin gel, (c) SEM image of rMSCs embedded in PoligoGel, (d) fibrin gel with rMSCs. While the fibrin promotes cell attachment and spreading, no evidence is seen of such activities in the PoligoGel samples. Scale bars are 50 μ m in the SEM images.

week suspended in the gel at about 100k cells/mL before being removed. Cells were then placed in differentiation medium, or had the RNA immediately collected for PCR analysis following removal from the gel. Cells induced to an adipogenic fate were confirmed to develop into adipocytes by both the presence of lipid droplets in the cells (data not shown) and expression of genes indicative of an adipocyte phenotype. Control cells removed from the gel not placed in adipogenic induction medium did not express the genetic markers for adipocytes; either immediately upon removal or at the time the induced cells were analyzed. While it would be unlikely for the soft gel substrate to induce differentiation of the cells to a hard tissue, the retained capacity to do so does allow for the confirmation of the cells retained pluripotency. When treated with osteogenic medium, cells removed from PoligoGel changed from a spindle shaped morphology to a more cuboidal shape. Cells were also harvested for RNA collection at the end of the incubation period for PCR analysis. Cells were positive for both osteogenic markers.

Peroxisome proliferator activated receptor γ (PPAR- γ) and adipocyte P2 (aP2) were measured for adipogenic differentiation; for bone osteoblastic specific factor-2 also known as Runx2(OSF-2) and osteocalcin (OCN). For each pair the first gene is an early marker and the second gene is a later marker for differentiation along that path. The early markers may be constitutively expressed at low levels. Cells removed from PoligoGel did not exhibit either of the late differentiation markers, but there was some upregulation in the expression of PPAR- γ in the cells removed from the gel. Differentiated cells did express both RNAs with or without incubation in the gel. PCR results looking for the different marker genes are shown in Figure 3.

The ability of transfected rMSCs to elicit a growth response was tested on HUVECs. As previously mentioned, cells grown under gelled PoligoGel did not proliferate. To avoid this effect, HUVECs were plated in 96-well plates, and 50 μ L of a fibrin gel was placed on top of the cells. MSC growth medium was added to the wells after the fibrin had formed a gel, and allowed to sit overnight. The following day the excess medium was removed by inverting the plate over sterile gauze, allowing the medium to drain by gravity. Transfected MSCs were mixed in PoligoGel four hours post transfection, and 200 μ L of the gel was added to each well. The cell concentration was approximately 100–200k cells/mL. After 48 h for cell growth the plates were placed at 4 °C for 5 min and had 200 mL of cold PBS added. The MSCs and excess PoligoGel were then removed by inverting the culture plate over sterile gauze. 200 μ L of growth medium was then added, above the fibrin gel and HUVEC cells. Alamar Blue was then used to assay the number of cells in

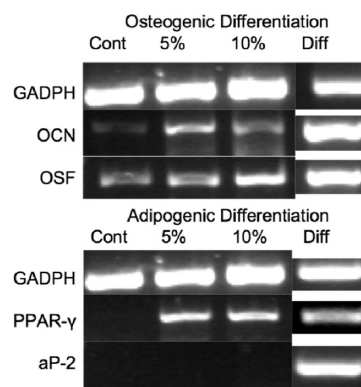


Figure 3. MSC differentiation did not occur as a result of exposure to PoligoGel at either a 5% or 10% concentration although they did express low levels of some factors compared to control groups. Cont, control cells grown on standard tissue culture surfaces; 5%, cells grown in 5% PoligoGel; 10%, cells grown in 10% PoligoGel; Diff, control cells exposed to differentiation medium without prior exposure to PoligoGel. Cells removed from PoligoGel retained the ability to differentiate as evidenced by production of both markers.

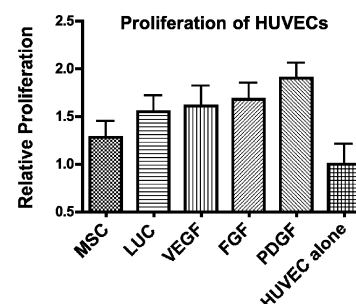


Figure 4. All transfected groups were significantly improved over HUVEC only group $p < 0.05$. PDGF-C was significantly different from all nongrowth factor sets at $p < 0.05$, but the difference was not significant between the growth factor transfected groups. Data is the average of 6 wells, and error bars are the standard deviation. Data was analyzed by ANOVA with Bonferroni post tests to test differences between groups.

each well. As seen in Figure 4, all groups outperformed the HUVEC only control, and all growth factor transfected groups outperformed the addition of unaltered stem cells.

The persistence of the transfection was observed with PCR as shown in Figure 5. All transfections showed elevated mRNA levels of gene expression beginning at 4 h and continuing to three days, with higher levels observed for FGF and VEGF at 7 days as well. Also of note is that the initial FGF transfection seems to have promoted an increase in the transcription of VEGF, and transfection with any of the three growth factors, but not a luciferase control, increased FGF mRNA levels. VEGF transfected cells continued to show increased FGF mRNA at three days out as well. By day seven, the expression levels had dropped back down near the levels of the control cells.

- (23) Georges, P. C.; Janmey, P. A. Cell type-specific response to growth on soft materials. *J. Appl. Physiol.* **2005**, *98*, 1547–1553.
- (24) Nicodemus, G. D.; Bryant, S. J. The role of hydrogel structure and dynamic loading on chondrocyte gene expression and matrix formation. *J. Biomech.* **2008**, *41*, 1528–1536.

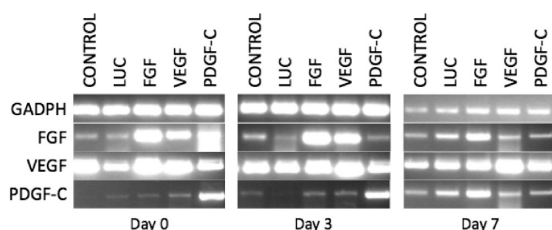


Figure 5. PCR data showing the expression of various growth factors both constitutively and as a result of transfection. Rows are genes of interest, and columns show the gene the cells were transfected with if applicable. Elevated mRNA levels were seen for both FGF and VEGF out to 7 days, with both of them positively influencing the expression of the other.

Discussion

Cell treatments will never reach their full potential if the cells fail to persist at the intended target. Cells are lost to washout from the injected site, migration, and cell death. Here it has been demonstrated that the use of a thermoresponsive hydrogel has the potential to be used for the *in vivo* delivery of cells. The use of the gel can reduce the loss of cells from the implant site due to washout and migration by forming a hydrogel scaffold that will hold cells near the injection site where they will be able to affect the desired tissues, both directly, as the gel degrades and cells are able to escape, and indirectly, by releasing growth factors either constitutively or by means of transfection. PoligoGel can be used to potentially reduce the number of cells required for injection by keeping a greater proportion of the cells nearby. While MSCs derived from bone marrow are relatively plentiful and easy to obtain, this benefit should not be overlooked, especially for allografts of cells such as cardiomyoblast, where yields are lower and more difficult to obtain.²⁵

PoligoGel was also shown to be nontoxic at low concentrations to multiple cell types although proliferation was adversely affected when a gel was formed above the cells. Mesenchymal stem cells suspended in the gel suffered no significant adverse consequences at cell concentration up to 1 million cells per mL. Cell viability remained high, above 90%, and dropped to 84% at the higher concentration. This cell death is not assumed to be due to PoligoGel or the encapsulation process, but rather due to lack of diffusion of oxygen and metabolites for cells farther from the surface resulting in necrosis, but this was not tested. Cells also do not appear to proliferate in the gel, based on the observation that cells remain suspended and are typically seen indepen-

dent of other cells, not forming clusters as would be expected for dividing cells unable to migrate through the substrate. Studies using direct cell transplantations have used far greater numbers of cells for the injection, typically in the tens to hundreds of millions in humans.²⁶ This would require far greater cell loading than would be practical with this system, but with the cells fixed in position it is possible to have equivalent if not greater numbers of cells near the requisite site.

Maintaining viable cells is only part of the difficulty in using stem cells. The cells must retain their differentiative capacity in order to achieve the full therapeutic potential. PoligoGel does not have any observed effect on mesenchymal stem cells' ability to differentiate after 1 week of being exposed to the gel, either by pushing the cells to a differentiated fate or limiting their ability to become terminally differentiated cell types. This allows for local cellular signals at the implant site to push the stem cells to differentiate into suitable cell types for wound healing, whether that is endothelial cell or smooth muscle cell for revascularization, or cardiomyocytes for replacing cells which may have died during the ischemic event.

Transfected cells can improve the outcome by delivering growth factors that can recruit additional cells to the tissues and also promote survival of the native cells. The use of PoligoGel does not impair the effectiveness of the transfection. Transfected cells suspended in the gel were able to elicit a growth response from HUVECs; a luciferase assay further confirmed no statistical difference in protein production between cells in the gel and those on standard surfaces (data not shown). Looking at mRNA expression demonstrated a typical expression profile with a peak at 3 days, and finished near 7 days.

Conclusions

With the growing number of cell therapies being tested and developed it is important to ensure that the cells are being used to the greatest advantage. The thermoreversible polymer PoligoGel has been shown to have the potential to be used for the delivery of stem cells. It does not influence stem cell differentiation and is nontoxic. Transfected cells embedded in the gel have been shown to be able to produce therapeutic proteins which can be delivered from the gel eliciting a growth response in other cell types.

Acknowledgment. This work was supported by NIH Grant HL 065477.

MP100094K

(25) Ou, M.; et al. Polymer transfected primary myoblasts mediated efficient gene expression and angiogenic proliferation. *J. Controlled Release* **2010**, *142*, 61–69.

(26) Abdel-Latif, A.; et al. Adult bone marrow-derived cells for cardiac repair: a systematic review and meta-analysis. *Arch. Intern. Med.* **2007**, *167*, 989–997.